

## Reel Return Program

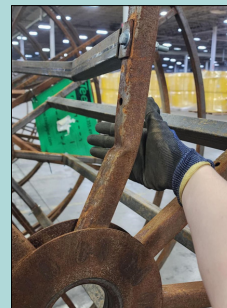
Teel Plastics is pleased to offer a reel return program. Empty reels can become an unnecessary burden to businesses, taking up space in facilities and creating an additional expense for disposal. This program is simple, beneficial to partners, and beneficial for the environment. To get started, contact Hermes "Ed" Duran Arias at 608-355-4564 or [hdarias@teel.com](mailto:hdarias@teel.com).

### Program Details

- Teel offers \$80 per reel returned for 60", 83", 84" reels and \$100 for 102" reels provided they are in good condition. They must not have bends, breaks, or excessive rust that has corroded through the metal.
- Reels must be double plated (have an arbor plate on each side of the flange). Arbor holes must be 3.5" to 4".
- Teel will inspect all reels upon return, and, in its sole discretion, decide if a payment is warranted for the reel. Reels can either be assembled or disassembled.
- Disassembled reel parts can be mixed in a shipment but will be counted by the number of whole reels that can be made from the returned parts. Please provide photos of proper quantities, banding, and palletizing of disassembled reels and cross bars before freight is requested.
  - » 24-30 flanges maximum banded on a single pallet
  - » 512 cross bars maximum banded on a single pallet
- Teel will deduct the freight cost from the total payment in instances where Teel arranges and pays for freight. If our partner arranges freight, the contact name, business entity, and address of the partner claiming payment must be provided and shipping must be pre-approved.
- Reels must be returned to 500 Industrial Court, Baraboo, WI 53913.
- Teel reserves the right to terminate, modify, or suspend this program at any time.



*Acceptable Reel*

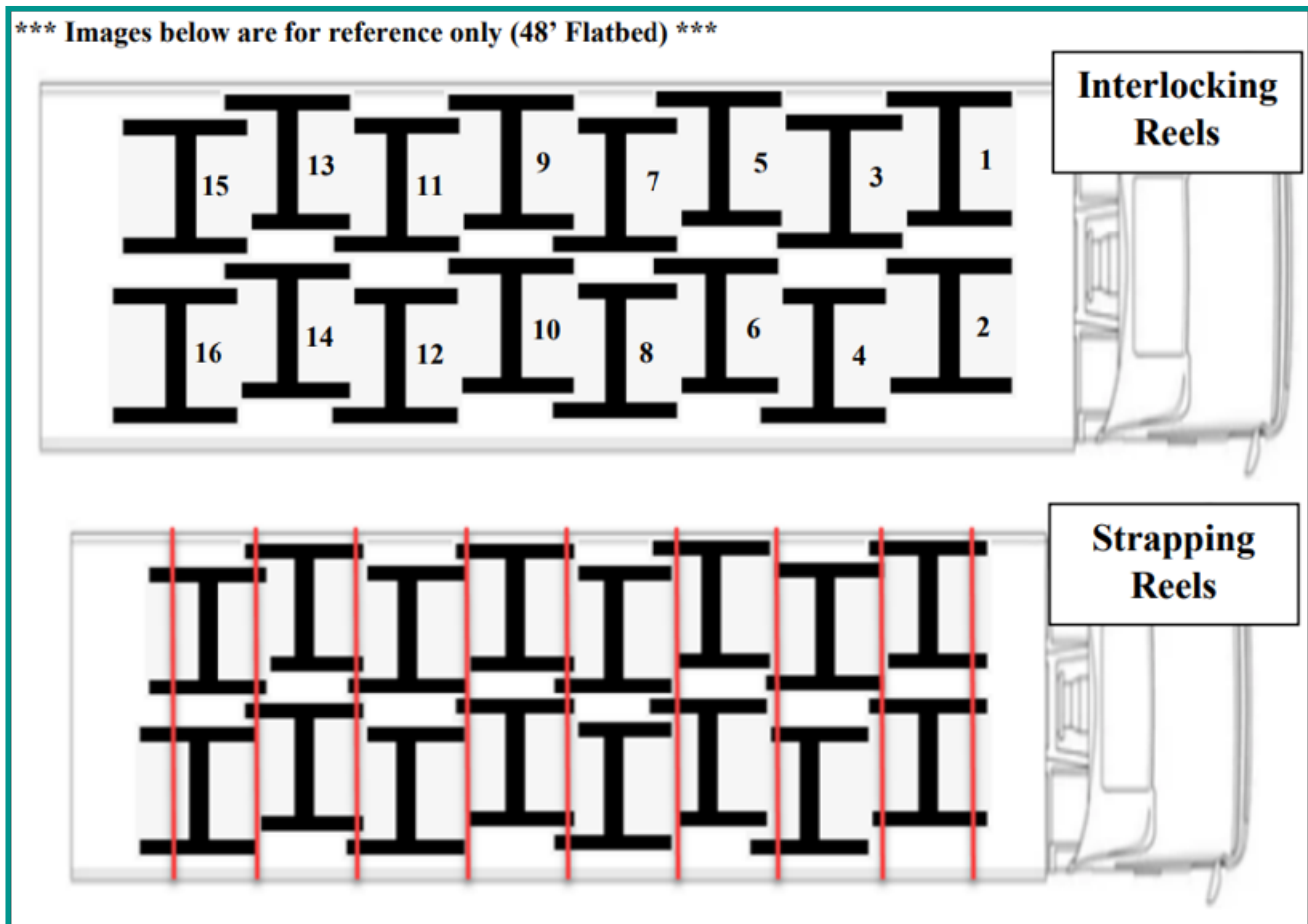


*Unacceptable Reels*

## Reel Loading Guide

The following is intended to be an aid in efficiently loading assembled empty reels onto a flatbed. Typically, 16 reels will fit on a 48' truck and 18 reels will fit on a 53' truck. Loading tools are typically provided by the freight company and include 8 to 12 straps and boards or other materials for chocking.

- Load the first two reels and chock to prevent movement.
- Load the second set of two reels, interlocking/overlapping them with the reels of the first row for balance and stability (see diagram below). Do this for all subsequent rows.
- Continue this alternating pattern and chock each row until the trailer is loaded.
- When finished loading the trailer, strap the reels down by feeding the straps through the overlapping reel sections (see diagram below).



Teel reserves the right to charge a material handling fee of \$50 per reel for the disposal of damaged or non-reusable reels. This includes reels that are bent, broken, excessively rusted, or have flanges that do not meet the required specifications.